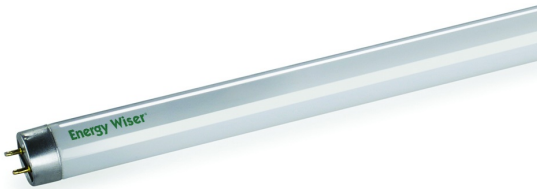


17W T8 841K 24 MED BI-PIN

Item #528717

Ordering Code F17T8/841/EW

UPC 739698528779



- High performance tri-phosphor for maximum brightness and color rendering
- Can be used on both instant and rapid start ballasts
- Reduced wattage F28 and High Lumen F32 CEE qualified
- Reduced wattage 38W T8s produce equal light output while using less energy than standard 32W T8s
- High Lumen T8s are up to 20% more efficient than standard 32W T8s

TECHNICAL SPECIFICATIONS

| | | | | | | | |
|------------------|-------|--------------------|--------------|--------------------|--------------------|-----------------|-------------------------|
| Item # | Watts | Bulb Type | Base | Volts | Finish/Description | Beam Angle (°) | Color Temperature (CCT) |
| 528717 | 17 | T8 | BI-PIN | N/A | Frost | N/A | 4100K |
| Color | CRI | Lumens | CBCP | Average Hours | M.O.L. (inches) | M.O.D. (inches) | Incandescent Equivalent |
| Cool White Light | 82 | 1300 | N/A | 24000 | 23.750 | 1.000 | N/A |
| Energy Star | DLC | Title 24 Compliant | Safety Rated | Safety Rating Type | Enclosed Rated | Dimmable | Warranty |
| N | N | N | N/A | N/A | N | N | N/A |

Order Multiple
QTY
25

APPLICATION SUGGESTIONS



Commercial

Sign /
Display