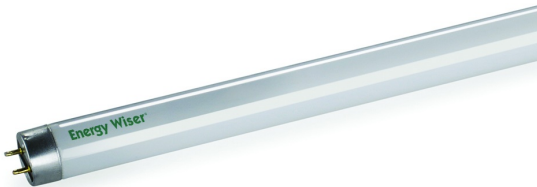


32W T8 841K 48 MED BI-PIN

Item #528732

Ordering Code F32T8/841/EW

UPC 739698528724



- High performance tri-phosphor for maximum brightness and color rendering
- Can be used on both instant and rapid start ballasts
- Reduced wattage F28 and High Lumen F32 CEE qualified
- Reduced wattage 38W T8s produce equal light output while using less energy than standard 32W T8s
- High Lumen T8s are up to 20% more efficient than standard 32W T8s
- This item contains mercury. It cannot be shipped into the state of Vermont (VT) or Maine (ME) due to non-compliance with recycling regulations in these states. If you reside in any state not listed you can ignore this warning.



TECHNICAL SPECIFICATIONS

Item #	Watts	Bulb Type	Base	Volts	Finish/Description	Beam Angle (°)	Color Temperature (CCT)
528732	32	T8	BI-PIN	N/A	Frost	N/A	4100K
Color	CRI	Lumens	CBCP	Average Hours	M.O.L. (inches)	M.O.D. (inches)	Incandescent Equivalent
Cool White Light	82	3000	N/A	24000	47.750	1.000	N/A
Energy Star	DLC	Title 24 Compliant	Safety Rated	Safety Rating Type	Enclosed Rated	Dimmable	Warranty
N	N	N	N/A	N/A	N	N	N/A

Order Multiple
QTY
25

APPLICATION SUGGESTIONS



Commercial

Sign /
Display